

PENATREX

Water Repellent sealer for Cementitious Surfaces

Penatrex by Liquid Armour, is a water-thinnable, solvent free emulsion, based on a mixture of silane and siloxane. Penatrex provides a highly effective barrier to protect concrete, natural stone and tile and other porous building materials from the damaging effects of natural elements such as:

- Rain
- Mould
- Damp
- Snow
- Frost
- Salt
- Seasonal temperature changes



100% WATER REPELLENT

Once water and salt seep through cementitious surfaces, it corrodes the concrete substrate. It will also corrode rebar. Rusted rebar swells to more than twice its size, causing even more damage. Treating cementitious surfaces with Penatrex will add years to the life of concrete by making it water repellent but allowing it to breathe.



Water and Salt causes cementitious surfaces to corrode



Rusted rebar swells to more than twice its size once corroded - causing damage to the concrete

PRODUCT FEATURES:

- Good depth penetration to protect rebar from rust.
- Rapid development of water repellency ensures immediate protection.
- Highly durable and effective beading effect.
- Tack free drying.
- Water-based and environmentally friendly.
- Stable in storage, even after dilution.
- Minimises biological growth.
- Sealing with Penatrex, protects against salt and moisture penetration, therefore minimising biological growth.
- Water Repellent properties protects against graffiti, fuel and oil spills.
- Ensures hassle free cleaning.
- Extend the life span of any porous cementitious surface.



Without Penatrex

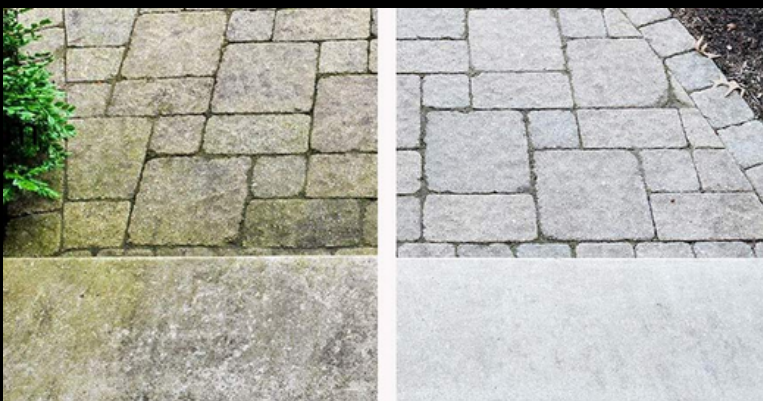
With Penatrex



Film-forming systems (coating and impregnation) will not be permeable to water vapor. Damage enables water to penetrate and cause further damage



PENATREX results in a good penetration depth. It is not film-forming and therefore allows water vapor to escape.



WITHOUT PENATREX

PROTECTED BY PENATREX

By applying Penatrex, you are protecting your cementitious surface from penetrating moisture and salt, causing algae and weed growth.



Because Penatrex forms a moisture barrier - paint will not be able to penetrate the surface. Graffiti simply washes off.

KEY FEATURE:

The key feature of Penatrex is the fact that it contains a stabilised mixture of silane and siloxanes that are susceptible to hydrolysis. Hydrolysis occurs only after application to the substrate, which breaks the emulsion. Alcohol is released and the emulsion is converted into a silicone resin water repellent. Penatrex, reduces the capillary absorption of the building which it has penetrated, but does not clog pores or capillaries. There is therefore little or no impairment of the building material's ability to "breathe".

HOW TO APPLY:

- Penatrex will not penetrate through painted surfaces. Must be applied to raw cementitious surfaces.
 - Any new cementitious surfaces need to cure for at least 28 days before applying Penatrex. This is to ensure all moisture has escaped.
 - Prepare the area by washing it off with a pressure washer. Make sure to get rid of all stains and oil.
 - All surfaces must be dry and moisture levels less than 4% before applying Penatrex.
 - Make sure to use all required protective gear such as goggles and gloves.
 - Dilute your Penatrex 1:3 with normal tap water. One part Penatrex to 3 parts normal tap water. Shake well.
 - Penatrex can be easily applied by paint brush or for best results, use a pressure pump sprayer.
 - Apply two wet on wet coats to ensure complete coverage.
 - If it starts to rain, stop the application and cover the impregnated areas.
 - Expected Spread rate is approximately 80m² per 20L mixture.
 - Penatrex dries instantly, but requires 24 hours to reach full protection.
- 